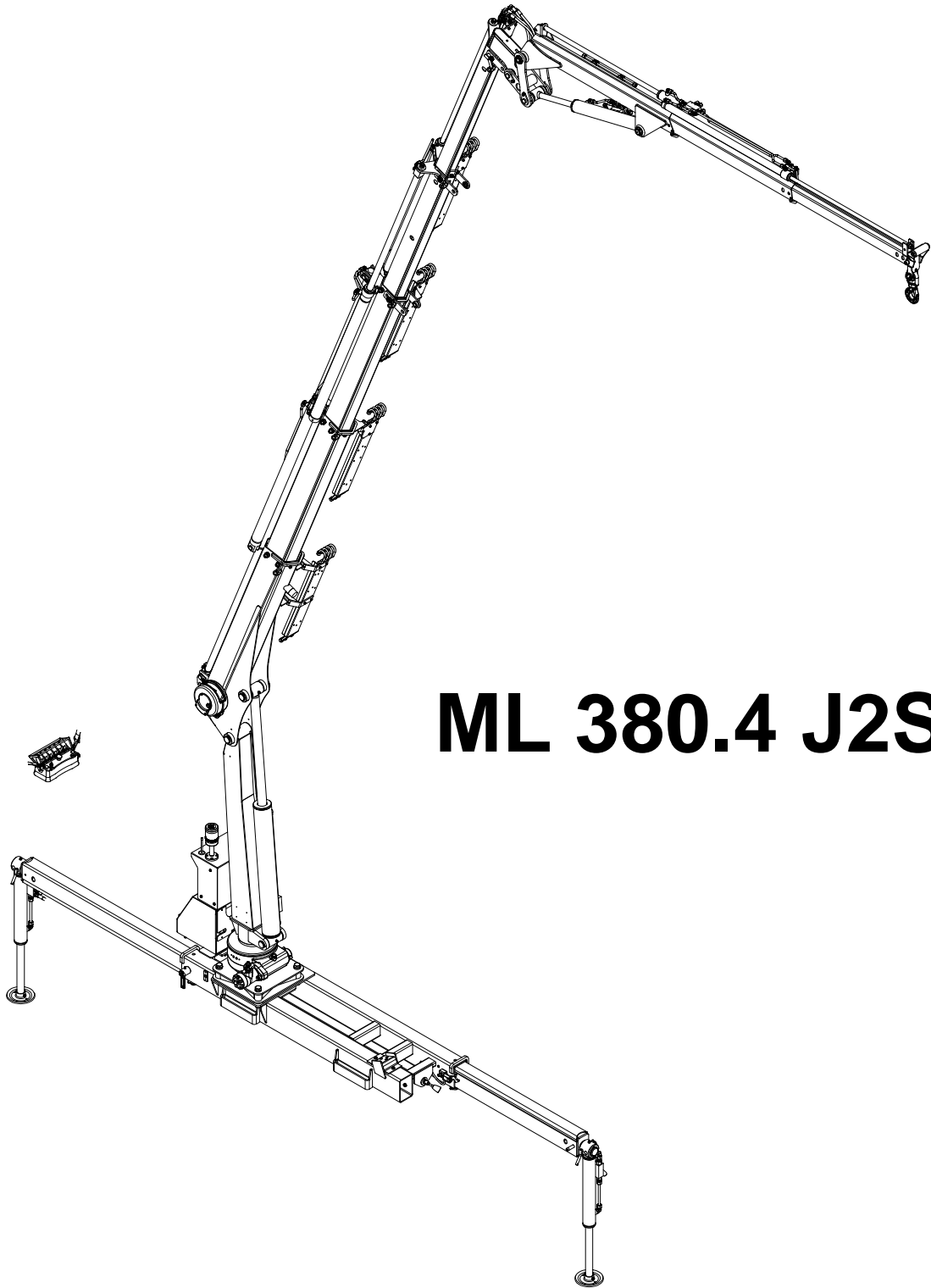




Next Hydraulics®

# TECHNICAL SHEET



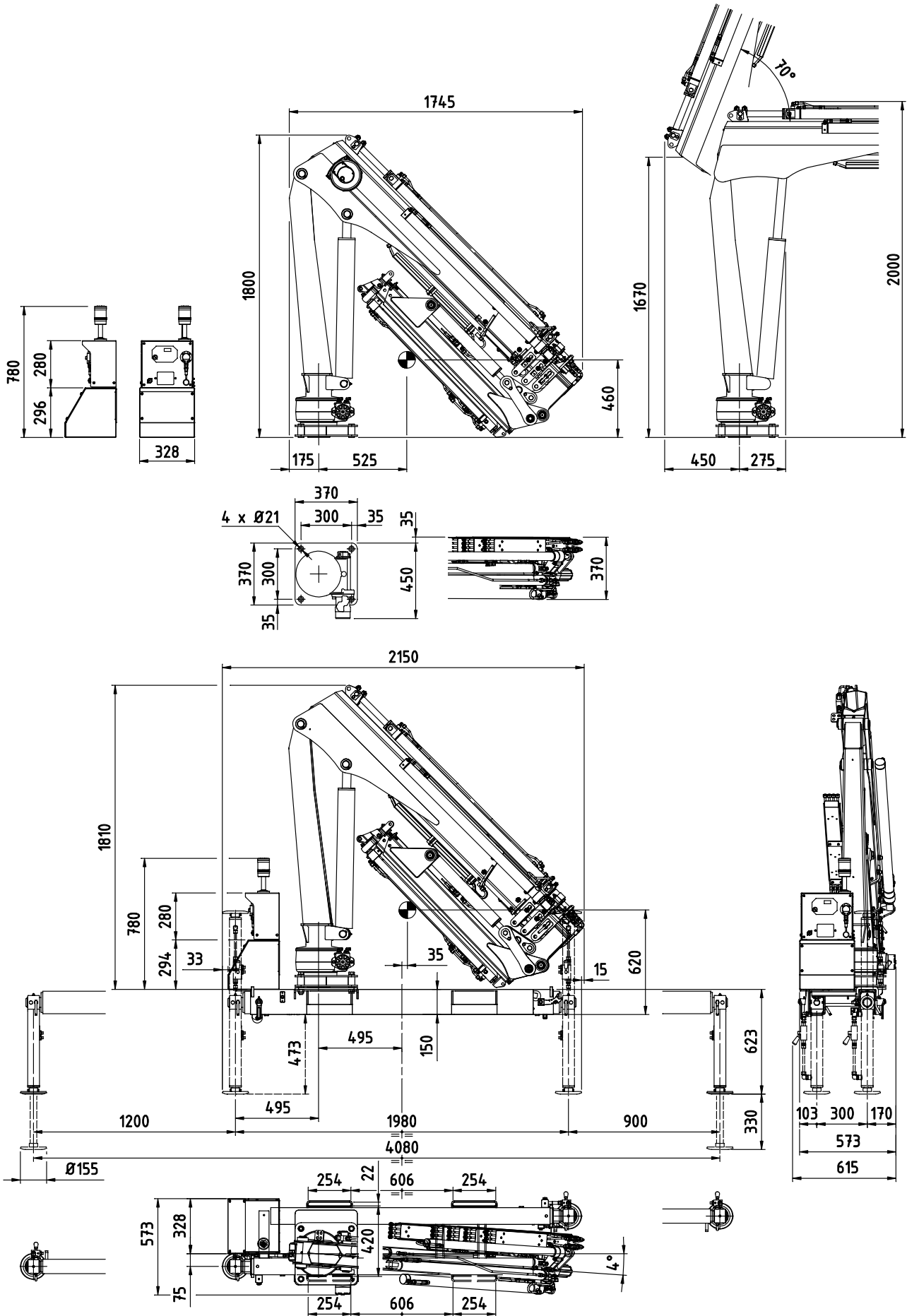
## ML 380.4 J2S

MP.0.217  
Rev. 0

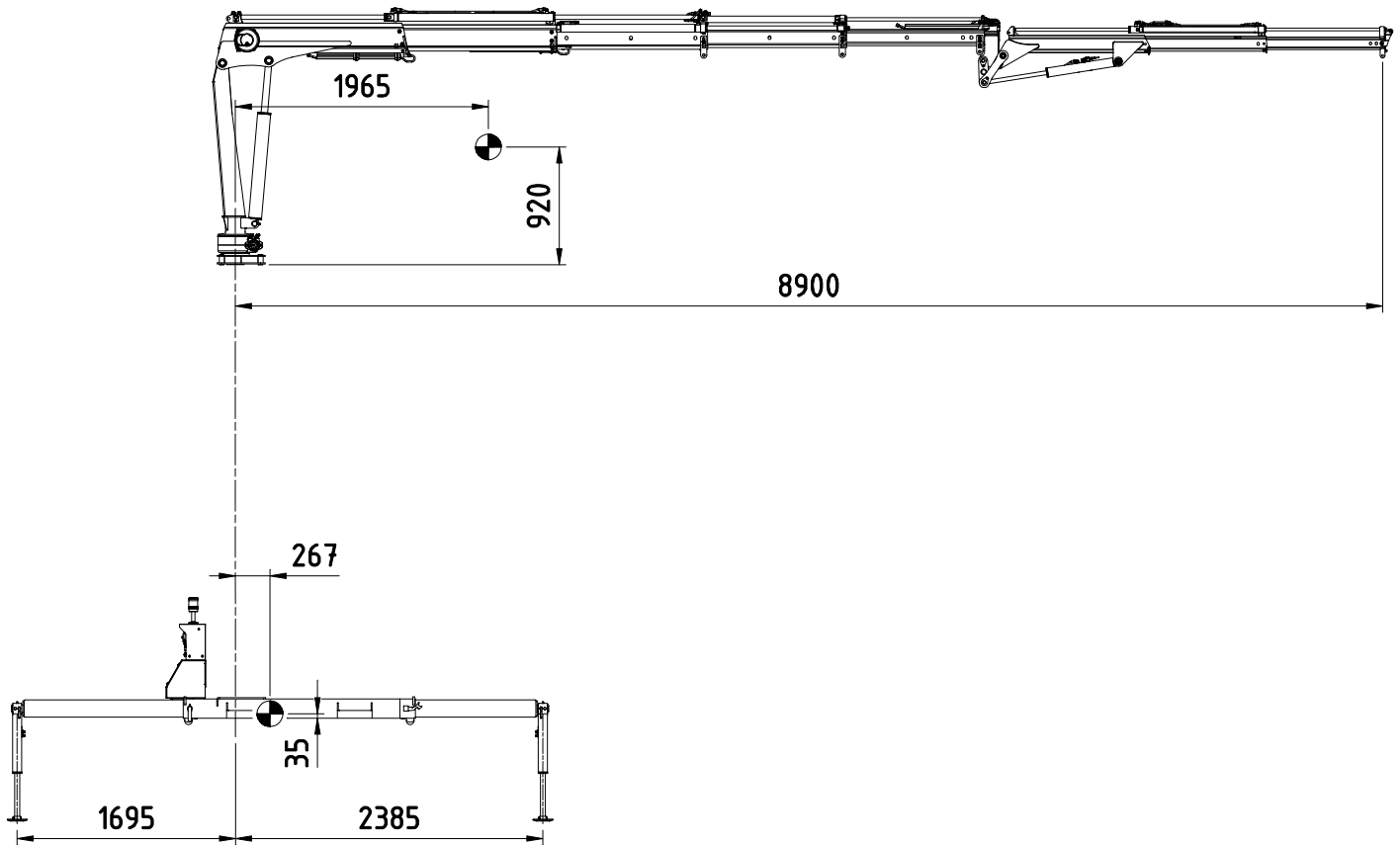


**Next Hydraulics®**  
RAISE YOUR EXPECTATIONS

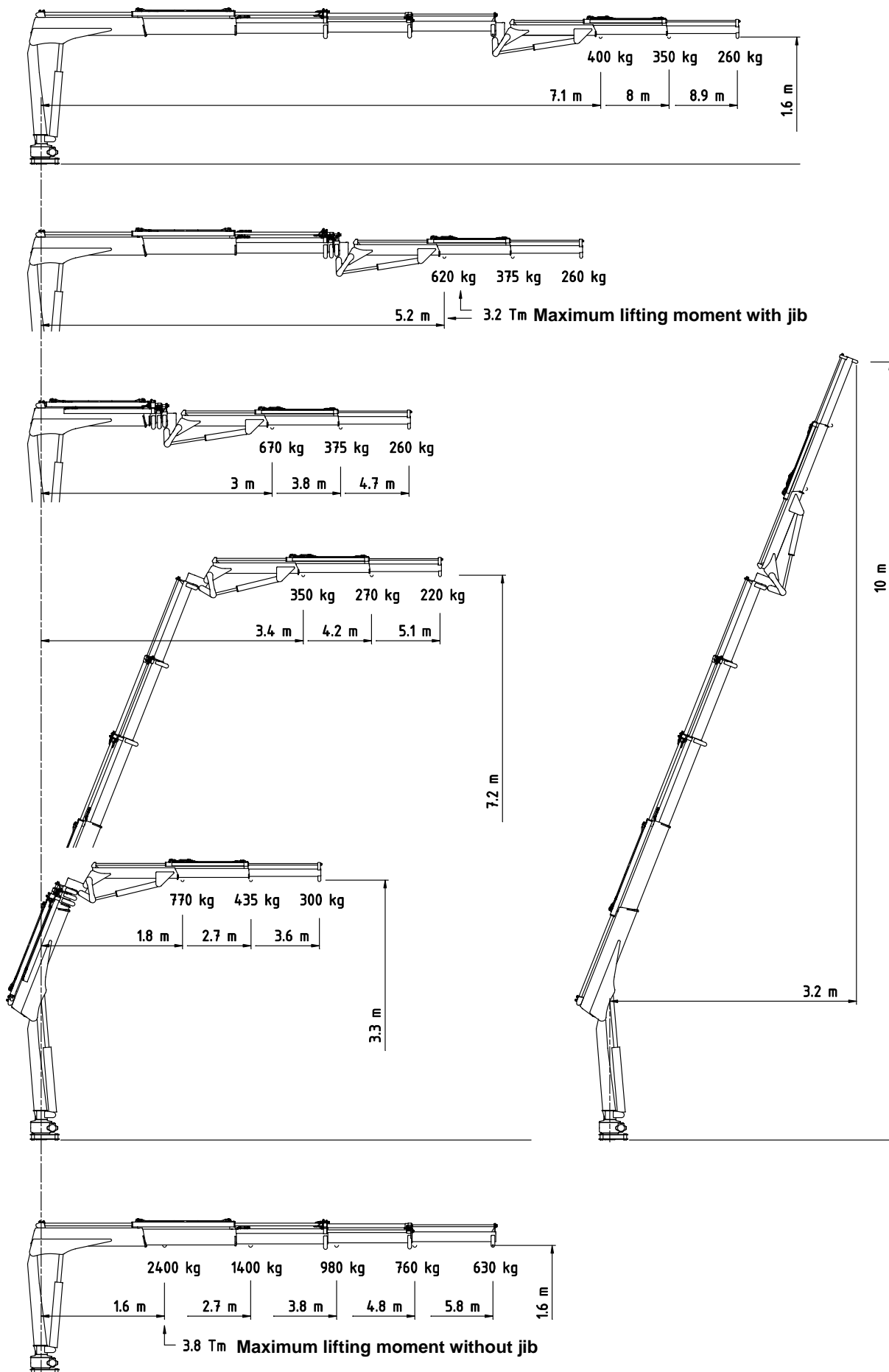
# Overall dimensions



# Centres of gravity at maximum outreach



# Load charts



<b>TECHNICAL DATA</b>		<b>ML 380.4 J2S</b>	
Crane rating (with jib – without jib)	kNm ft.lbs	31.5 - 37 23200 - 27300	
Number of extensions            main boom - jib	N°	4	2
Maximum outreach	m ft	8.9 29' 2"	
Slewing angle	°	360°	
Maximum angle slope	°	5°	
Slewing torque	kNm ft.lbs	4.8 3540	
Max. lifting height from crane base	m ft	10 32' 9"	
Minimum suggested oil flow	l/min gpm	15 4.0	
Max. working pressure	bar psi	230 3340	
Hydraulic power	kW	5.5	
Crane weight without stabilizers base	kg lbs	510 1120	
Manual extension stabilizers base weight	kg lbs	190 420	
Hydraulic oil tank capacity	l USG	30 7.9	
Oil volume all cylinders extended (crane without stabilizers base)	l USG	14.8 3.9	
Oil volume all cylinders retracted (crane without stabilizers base)	l USG	8.9 2.3	
Oil volume all cylinders extended (crane with stabilizers base)	l USG	16.7 4.4	
Oil volume all cylinders retracted (crane with stabilizers base)	l USG	10 2.6	
Max. current absorption from the control system (12V DC)	A	7.2	
Max. current absorption from the control system (24V DC)	A	6.1	

## Standard equipment:

**Control system:** Multifunction proportional radio remote control with integrated safety system

- Transmitter:
  - shoulder belt
  - 6 functions-proportional levers
  - 1 selector for stabilizers function
  - Emergency stop
  - Warning LEDs for load limiter, separate for main cylinder and for jib articulation cylinder
  - 1 Enable/Horn button
  - 1 Auxiliary button
- Serial cable
- Recharging cable for vehicle cigar lighter
- CAN BUS receiver
- Electronic CAN BUS control unit
- Multifunction (6 functions) proportional control valve (with lever holders and emergency manual override)
- Harness with integrated shunt box with ignition keyswitch and display. Standard auxiliary signals available on the junction bar terminals: horn, flash light, yellow light, red light
- Flash light turret
- Two pressure transducers (one for main cylinder and one for jib articulation cylinder)
- Slew limiter by proximity sensors

### **Jib control:**

- Slides for hoses
- Cable reel for pressure transducer

### **Options:**

- Stability control unit SCU
- Additional CAN BUS unit for auxiliary signals
  - Engine START/STOP
  - Engine accelerator/decelerator
  - Compressor ON/OFF
  - Beacon